

FUJITSU Component Thermal Printer FTP-62GDSL101/111/121 series Interface Boards

Fujitsu interface boards for 24V FTP-6xGMCLxx3 series

Features

- USB (full speed) and RS-232C serial interface
- Various detection functions: Paper mark, platen open, thermal head temperature, power supply voltage
- Various alarm and protective functions: Thermal head temperature, power supply voltage, MCU operations, motor over current protection
- Print quality stabilization by the thermal head temperature and power supply voltage monitoring
- Supports both full cut and partial cut
- Two font types from 12 and 16 dots system character
- Support registration of characters and images

■ Part numbers

Part number	Supply voltage	Interface type	Font	Mechanism part number
FTP-62GDSL101#01	24V	USB/RS-232C	ANK, Thai, Kanji	FTP-62GMCL163
FTP-62GDSL101#02			ANK, Thai, Traditional Chinese	FTP-62GMCL163#01 FTP-62GMCL463 FTP-63GMCL163 FTP-63GMCL463
FTP-62GDSL111#01	24V	USB/RS-232C	ANK, Thai, Kanji	FTP-62GMCL163#10
FTP-62GDSL111#02			ANK, Thai, Traditional Chinese	FTP-62GMCL463#11 FTP-63GMCL463#10
FTP-62GDSL121#01	12V	USB/RS-232C	ANK, Thai, Kanji	FTP-62GMCL473
FTP-62GDSL121#02			ANK, Thai, Traditional Chinese	FTP-62GMCL473#01 FTP-63GMCL473

■ Drivers

Windows® 7, 8, 10, Vista

■ Interface specification at host side

Item	Specifications
RS-232C	Data speed: 9.6k, 19.2k, 38.4k, 115.2k, 230.4k bps Synchronous method: Asynchronous Handshake: RTS (DTR) / CTS (DSR) control, XON/XOFF control Parity: Non, even, odd
USB V2.0	Transmission rate: Full speed 12Mbps max. Interface class: Printer device

■ Specifications

1.1 Base specifications

Item	Specifications
Dimensions	70 x 37mm
Weight	Approx. 15g
Communication interface *1	RS-232C USB full speed (max. 12Mbps)

1.2 Print/paper feed specifications

Item	Specifications		
Part number	FTP-62GMCL101#**	FTP-62GMCL111#**	FTP-62GMCL121#**
Dot pitch	0.125mm		
Number of dots	432 dots/line		
Max. printing width	54mm		
Max. printing height*1	240mm		
Line space*2	Approx. 1/8 inch (26 dots line)		
Print speed*3	200mm/s	250mm/s	120mm/s
Paper feed speed (/ATF)	Approx. 100mm/s		

*1: At high speed bit image printing

*2: Changeable by command.

*3: Conditions:

Paper: PD150R or equivalent

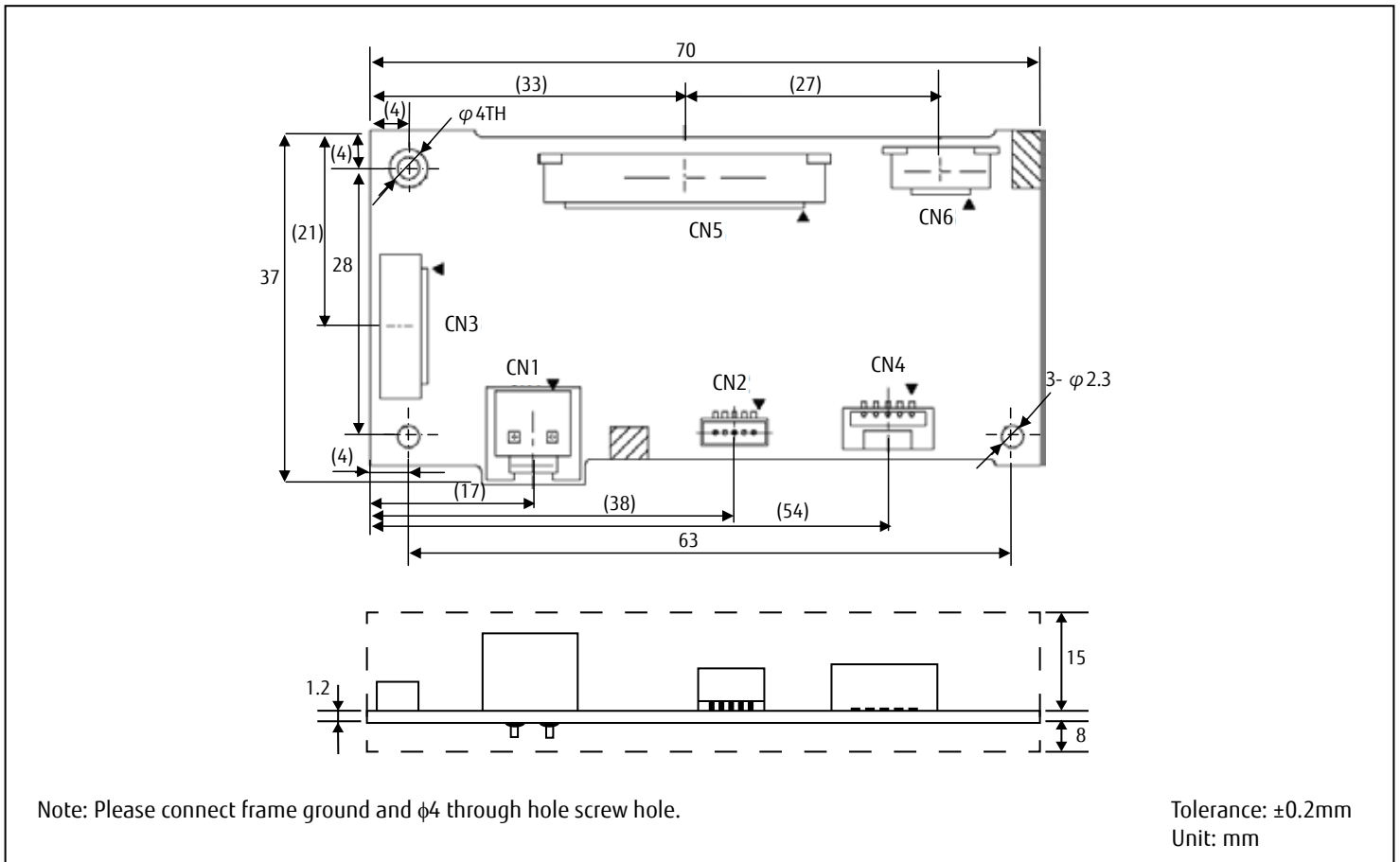
Voltage: 12V (12V drive model) / 24V (24V drive model)

Print ratio: Up to 12.5%

Operating temperature/humidity: 25°C, 60+/-15%

When printing at low speed, a white line may occur depending on printing pattern or division control. Therefore, please monitor the paper advancement when printing at low speeds.

■ Dimensions



■ Control circuit board and connector types

Symbol	Name	Function	Note
CN1	Power supply connector	To connect +12V/+24V power supply	-
CN2	RS-232C connector	To connect RS-232C interface	-
CN3	External I/O connector	I/O	-
CN4	USB connector	To connect USB	-
CN5	Head / motor connector	FPC connection	-
CN6	Motor / auto cutter connector	FPC connection	-

■ Connector Pin Assignment of interface board

Note: Symbol "-" means a negative logic signal.

"I" or "O" means a signal direction from the interface board side.

- Power supply connector (CN1)

Mating connector part number: VHR-2N (J.S.T.) or equivalent

Recommended cable: AWG#16, cable length max. 300mm

No.	Signal	I/O	Content	No.	Signal	I/O	Content
1	Vp	I	Power input	2	GND	-	Ground

- RS-232C connector (CN2)

Mating connector part number: SHR-05V-S (J.S.T.) or equivalent

Recommended cable: AWG#32 to 28, cable length max. 500mm

No.	Signal	I/O	Content	No.	Signal	I/O	Content
1	RXD	I	Receive data signal	2	TXD	O	Transmission data signal
3	RTS	O	Request to send signal	4	GND	-	Signal ground
5	CTS	I	Clear to send signal				

- External I/O Connector (CN3)

Mating connector part number: SHR-12V-S (J.S.T.) or equivalent

Recommended cable: AWG#32 to 28, cable length max. 300mm

No.	Name	I/O	Description	No.	Name	I/O	Description
1	3.3V	O	Power to extend functionality	2	/INPRM	I	Initialization request signal
3	/ATF	I	Paper feed signal	4	/SLCTIN	I	Detection function setting signal
5	LED1	O	POWER LED signal	6	LED2	O	ERROR LED signal
7	/CUT	I	Paper cut signal (low active)	8	GND	-	Signal ground
9	GND	-	Signal ground	10	GND	-	Signal ground
11	/NES	I	Near end signal	12	POW_NES	O	Power for near end sensor

- USB Connector (CN4)

Mating connector part number: SSSL-002GA1-PO.2 (Au) or equivalent

Recommended cable: AWG#32 to 26, cable length max. 1,000mm

No.	Signal	I/O	Content	No.	Signal	I/O	Content
1	Vbus	I	Vbus signal	2	D-	I/O	D- signal
3	D+	I/O	D+ signal	4	GND	-	Signal ground
5	FG	-	Frame ground				

■ Connector pin assignments of printer mechanism (2-inch)

Command	Content
HT	Moves print position to the next tab
LF	Line feed
FF	Feeds forms (new page)
ESC FF	Data print in page mode *4
ESC EM+n	Setting the amount of feeding at automatic paper feed
ESC RS	Black/white reverse printing specification
ESC SP+n	Character space setting
ESC US	Black/white reverse printing cancellation
ESC !+n	Sets print mode
ESC \$+n1+n2	Horizontal absolute position setting *4
ESC %+n	Download character specification/cancellation
ESC &+y+c1+c2+x+d1 to dn	Download character definition *1, 3
ESC *+m+n1+n2+d1 to dk	Bit image print
ESC -+n	Undeline setting
ESC 2	Sets default line spacing
ESC 3+n	Line pitch setting
ESC ?+n	Download character deletion *1, 3
ESC @	Printer reset
ESC A+n	Line spacing setting
ESC C+n	Sets the page length line mode
ESC D+n1 to nk+NUL	Sets horizontal tab position
ESC E+n	Emphasis printing specification/cancellation
ESC J+n	Feeds paper in forward direction and prints
ESC K+n	Reverse paper feed
ESC L	Page mode selection *4
ESC Q+n+!+j	Frame overlay function setting *1, 3
ESC R+n	Selects international character
ESC S	Line mode selection *4
ESC T+n	Print direction setting in page mode *4
ESC V+n	Right rotation 90° specification/cancellation
ESC W+x1+x2+y1+y2+dx1+dx2+dy1+dy2	Print area setting in page mode *4
ESC X+m+n	Setting the turning time of the motor excitation
ESC Y+SOH+ESC+x+a+FF+m+n+d~	Firmware download *1
ESC ¥ n1+n2	Horizontal relative position setting *4
ESC a+n	Positional alignment
ESC c+1+n	Sets internal processing
ESC c+5+n	Panel switch valid/invalid setting
ESC d+n	Printing and n-line feeding
ESC e+n	Prints and reverses feeds n-line
ESC j	Full cut
ESC m	Partial cut

Command	Content
ESC s+n	Sets printing speed
ESC t+n	Character code table selection
ESC {+n	Sets/resets upside down printing
ESC DEL +n	Flash memory erase *1, 3
FS !+n	Kanji printing mode collective specification *2
FS &	Kanji printing mode specification *2
FS *+m+n1+n2+d1 to dk	High speed batch image print *4
FS -+n	Kanji underline specification/cancellation *2
FS .	Kanji printing mode cancellation *2
FS 2+c1+c2+d1 to dn	External character definition *1, 2, 3
FS 9+n	Sets the detection functions
FS C+n	Kanji code system selection *2
FS E+n	Correction of impressed energy
FS S+n1+n2	Kanji spacing setting *2
FS W+n	Kanji double height and width printing specification/cancellation *2
FS r+n	Parameter transmission (serial mode)
GS !+n	Character size setting
GS \$+n1+n2	Vertical absolute positin setting in page mode *4
GS &+m+x+y1+y2+d1 to dn	Downloaded image definition
GS '+m+n	Registered bit image printing *3
GS (+E+L1+L2+fn+d1 to d9 (fn=67)	RS-232C communication setting *1, 3
GS <	Line feeds to the next mark
GS A+m+n	Sets the line feed length after mark detection
GS B+n	Bar code angle setting *4
GS E+n	Sets print quality
GS H+n	HRI character printing position selection *4
GS L+n1+n2	Left margin setting
GS V+m+n	Paper cutting (this command is only available for chip)
GS W+n1+n2	Sets print area width
GS ¥+n1+n2	Vertical relative position setting in page mode *4
GS a+n	Set auto status transmission
GS e+m+n	Sets bar code width
GS f+n	HRI character font selection *4
GS h+n	Barcode height setting
GS k+m+n+d1 to dn	Bar code print
GS k+m+k1+k2+k3+k4+{[p1][d(1, 1)] to [d(1, j)]} to {[pi][d(i, 1)] to [d(i, j)]}NUL	QR code print *4
GS k+m+k1+k2+k3+k4+nL+nH+d1 to dn	PDF417 code print *4
GS k+m+n+k+pL+pH+d1 to dp	Bar code (GS1 DataBar) print *4
GS k+m+n+k1+k2+k3+k4	Bar code (GS1 DataBar) setting *4
GS w+n	Bar code width magnification setting

*1: Write to/erase the non-volatile memory

*2: Only model equipped with Kanji character corresponds

*3: Only model equipped with the extended nonvolatile memory

*4: Only model equipped with the extended volatile memory

Windows®, WIndows Vista® are registered trademarks in the U. S. and other countries.

Contact

Japan FUJITSU COMPONENT LIMITED Shinagawa Seaside Park Tower 12-4, Higashi-shinagawa 4-chome, Tokyo 140 0002, Japan Tel: (81-3) 3450-1682 Fax: (81-3) 3474-2385 Email: fcl-contact@cs.jp.fujitsu.com Web: www.fujitsu.com/jp/group/fcl/en/	Europe FUJITSU COMPONENTS EUROPE B.V. Diamantlaan 25 2132 WV Hoofddorp Netherlands Tel: (31-23) 5560910 Fax: (31-23) 5560950 Email: info@fceu.fujitsu.com Web: emea.fujitsu.com/components/	China FUJITSU ELECTRONIC COMPONENTS (SHANGHAI) CO., LTD. Unit 4306, InterContinental Center 100 Yu Tong Road, Shanghai 200070, China Tel: (86 21) 3253 0998 /Fax: (86 21) 3253 0997 Email: fcsh@cn.fujitsu.com www.fujitsu.com/cn/products/devices/ components/	Korea FUJITSU COMPONENTS KOREA, LTD. Alpha Tower #403, 645 Sampyeong-dong, Bundang-gu, Seongnam-si, Gyeonggi-do, 13524 Korea Tel: (82 31) 708-7108 Fax: (82 31) 709-7108 Email: fcal@fcal.fujitsu.com www.fujitsu.com/sg/products/ devices/components/
North and South America FUJITSU COMPONENTS AMERICA, INC. 2290 North First Street, Suite 212 San Jose, CA 95131 U.S.A. Tel: (1-408) 745-4900 Fax: (1-408) 745-4970 Email: components@us.fujitsu.com Web: https://us.fujitsu.com/components/	Asia Pacific FUJITSU COMPONENTS ASIA, Ltd. 102E Pasir Panjang Road #01-01 Citilink Warehouse Complex, Singapore 118529 Tel: (65) 6375-8560 / Fax: (65) 6273-3021 Email: fcal@fcal.fujitsu.com www.fujitsu.com/sg/products/devices/ components/	Hong Kong FUJITSU COMPONENTS HONG KONG Co., Ltd. Room 06, 28/F, Greenfield Tower, Concordia Plaza, No.1 Science Museum Road, Tsim Sha Tsui East, Kowloon, Hong Kong Tel: (852) 2881 8495 Fax: (852) 2894 9512 Email: fcal@fcal.fujitsu.com www.fujitsu.com/sg/products/devices/ components/	

Copyright

All trademarks or registered trademarks are the property of their respective owners. Fujitsu Components America or its affiliates do not warrant that the content of datasheet is error free. In a continuing effort to improve our products Fujitsu Components America, Inc. or its affiliates reserve the right to change specifications/datasheets without prior notice. Copyright ©2019 Fujitsu Components America, Inc. All rights reserved. Revised July 26, 2019.
