

Not for New Design

FUJITSU Component Touch Panels

Embossed Switch Series

FID-1320 series

Fujitsu Custom Industrial Resistive Touch Panels

Overview

The industrial resistive touch panels (FID-1320 series) feature a film-glass sensor with a flush surface top cover film structure and are available in custom sizes up to 22- inches. The FID-1320 series touch panels have 78% (typical) transparency, an operating life of 1 million taps, and many options for dome switch configuration. The embossed switches are formed in the cover film to provide tactile click feel for the user, similar to the experience of mechanical switches.

Dome switch icons can be illuminated by LED backlight or the LCD.

Switch actions are communicated to the main system via the touch panel controller as coordinates, similar to standard finger input on the touch panel area. Switches, if required, can also be connected directly to the system without using the touch panel controller and can be designed with discrete wiring as a simple contact closure switch. The flush surface design is dust proof, water proof, and easy to clean.

Features

- Flush surface design
- Color frame, logo, legend
- Custom layout for specific needs
- Tactile embossed dome switches
- Strengthened glass option
- Graphical frame / Logo option
- Custom Design product for Industry
- RoHS compliant



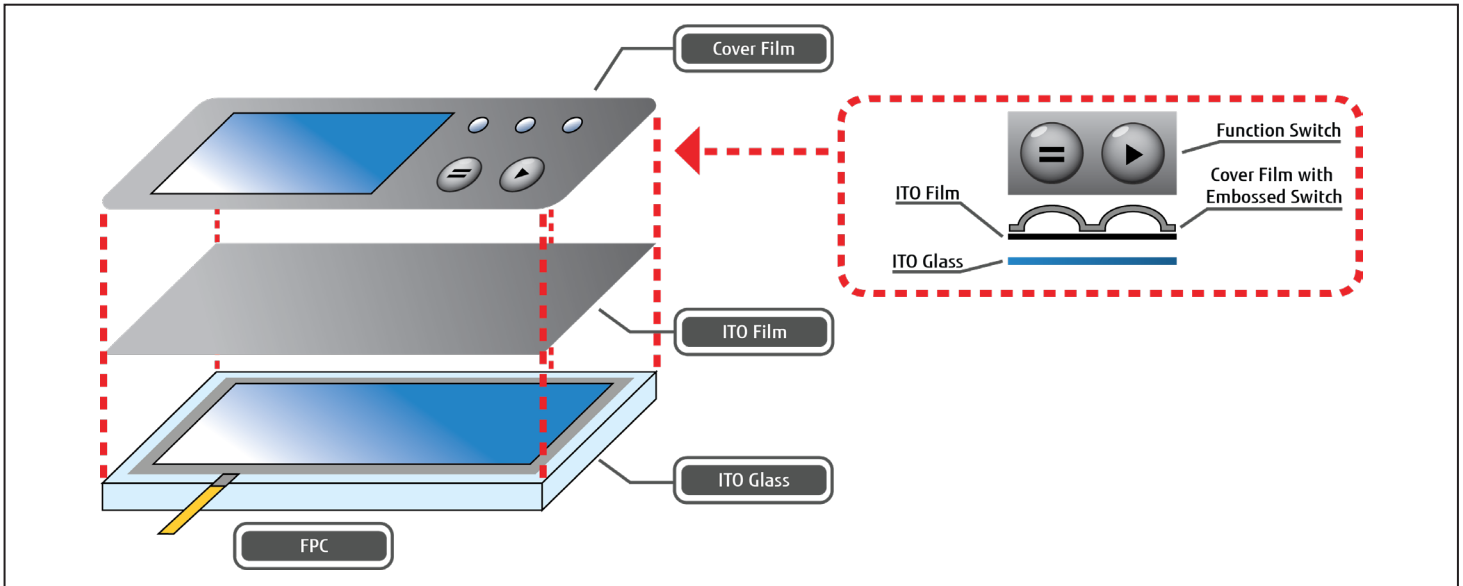
FID-1320 series

■ Specifications (example)

Item	Specifications	
Type	4-wire resistive	
Input method	Pen and finger	
Panel size	Up to 22-inch	
Hardness	Min. 3H	
Construction	Film glass with cover film	
Tapping life	Min. 1,000,000	
Optical	Transparency	78% (typical)
	Haze	6 % (typical)
Electrical rated voltage	5.0 VDC (typical)	
Environmental conditions	Temperature	-5° to +60°C (extended range available)
	Humidity	5 to 90% RH *1

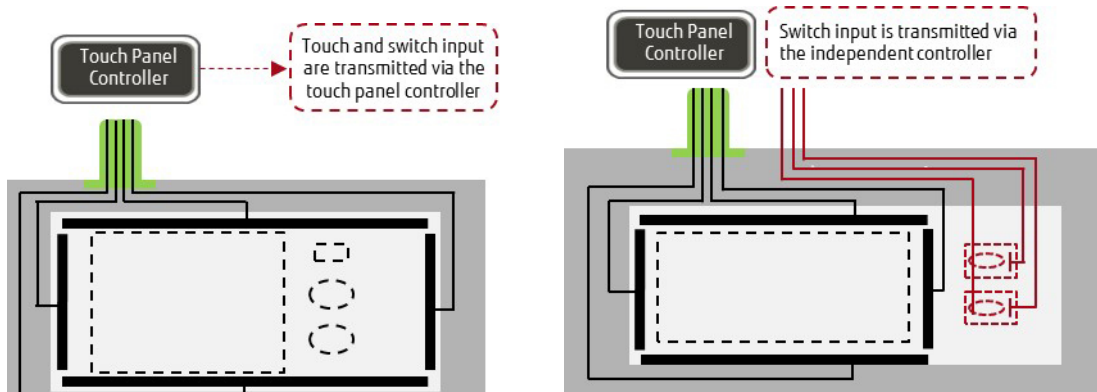
*1: Max. wet temperature is 38°C (without condensation).

■ Structure

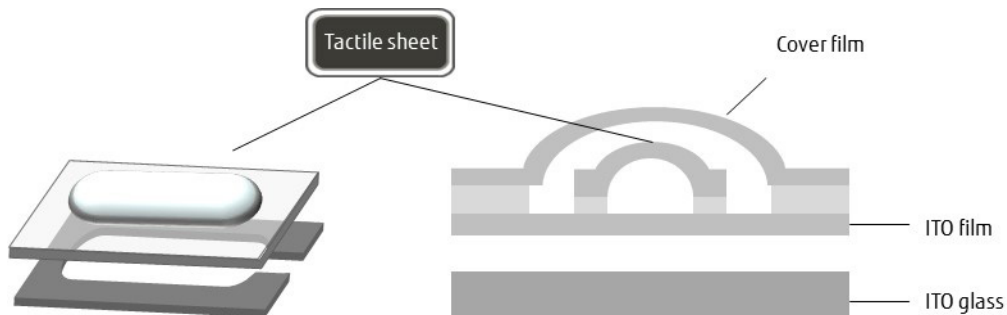


■ Options

1. The signal of the switches can be transmitted via the touch panel controller or independently.



2. Stronger tactile feedback can be provided by installing a tactile sheet.



Contact

Japan

FUJITSU COMPONENT LIMITED
Shinagawa Seaside Park Tower
12-4, Higashi-shinagawa 4-chome,
Tokyo 140 0002, Japan
Tel: (81-3) 3450-1682
Fax: (81-3) 3474-2385
Email: fcl-contact@cs.jp.fujitsu.com
Web: www.fujitsu.com/jp/group/fcl/en/

North and South America

FUJITSU COMPONENTS AMERICA, INC.
1230 E. Arques Ave., MS 160
Sunnyvale, CA 94085 U.S.A.
Tel: (1-408) 745-4900
Fax: (1-408) 745-4970
Email: components@us.fujitsu.com
Web: http://us.fujitsu.com/components/

Europe

FUJITSU COMPONENTS EUROPE B.V.
Diamantlaan 25
2132 WV Hoofddorp
Netherlands
Tel: (31-23) 5560910
Fax: (31-23) 5560950
Email: info@fceu.fujitsu.com
Web: emea.fujitsu.com/components/

Asia Pacific

FUJITSU COMPONENTS ASIA, Ltd.
102E Pasir Panjang Road
#01-01 Citilink Warehouse Complex,
Singapore 118529
Tel: (65) 6375-8560 / Fax: (65) 6273-3021
Email: fcal@sg.fujitsu.com
www.fujitsu.com/sg/products/devices/
components/

China

FUJITSU ELECTRONIC COMPONENTS
(SHANGHAI) CO., LTD.
Unit 4306, InterContinental Center
100 Yu Tong Road, Shanghai 200070, China
Tel: (86 21) 3253 0998 /Fax: (86 21) 3253 0997
Email: fcal@cn.fujitsu.com
www.fujitsu.com/cn/products/devices/
components/

Hong Kong

FUJITSU COMPONENTS HONG KONG Co., Ltd.
Room 06, 28/F, Greenfield Tower, Concordia
Plaza, No.1 Science Museum Road,
Tsim Sha Tsui East, Kowloon, Hong Kong
Tel: (852) 2881 8495 Fax: (852) 2894 9512
Email: fcal@sg.fujitsu.com
www.fujitsu.com/sg/products/devices/
components/

Korea

FUJITSU COMPONENTS KOREA, LTD.
Alpha Tower #403,
645 Sampyeong-dong,
Bundang-gu, Seongnam-si,
Gyeonggi-do, 13524 Korea
Tel: (82 31) 708-7108
Fax: (82 31) 709-7108
Email: fcal@sg.fujitsu.com
www.fujitsu.com/sg/products/
devices/components/

Copyright

All trademarks or registered trademarks are the property of their respective owners. Fujitsu Components America or its affiliates do not warrant that the content of datasheet is error free. In a continuing effort to improve our products Fujitsu Components America, Inc. or its affiliates reserve the right to change specifications/datasheets without prior notice. Copyright ©2021 Fujitsu Components America, Inc. All rights reserved. Revised September 8, 2021.
